



MORE Put Up and Takedown Policies

01. MORE Background

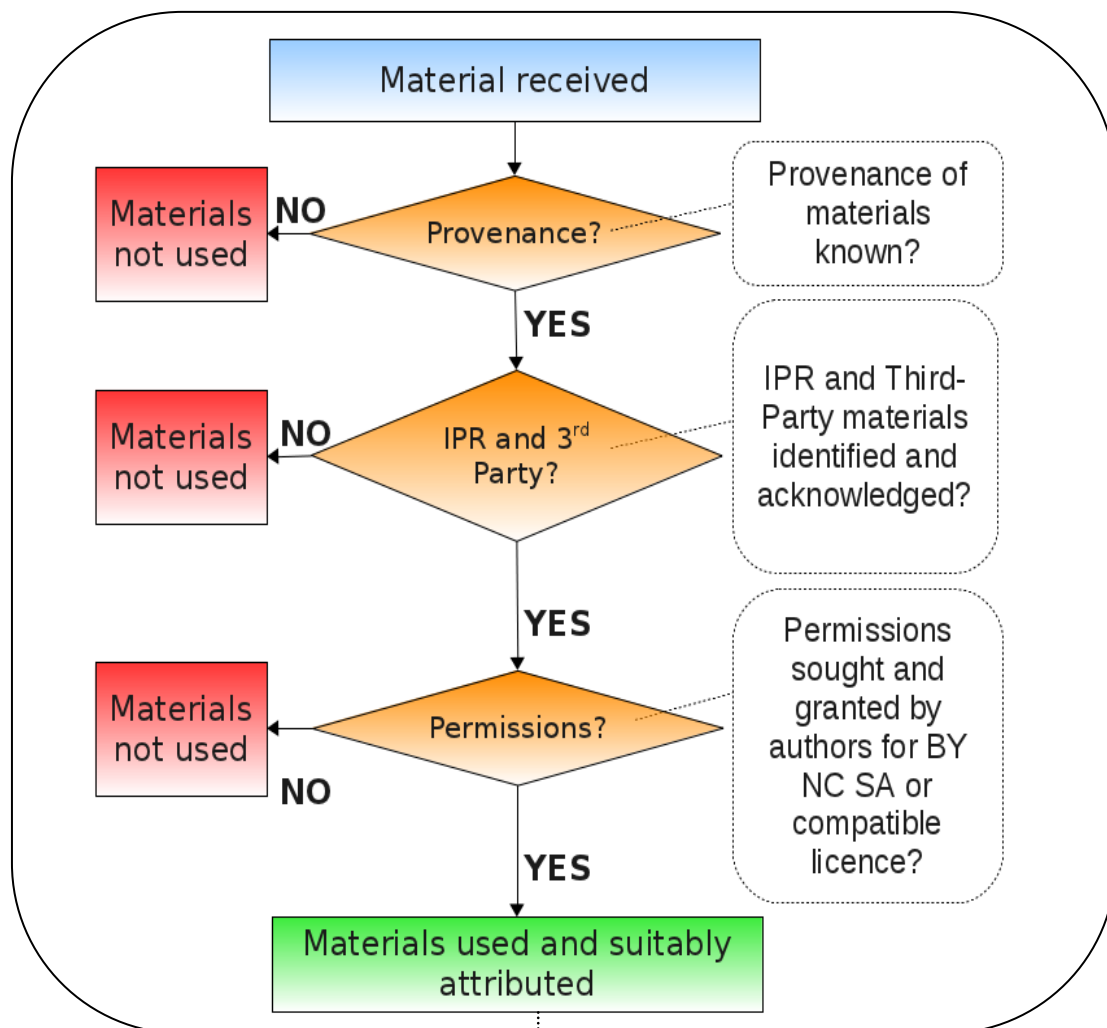
[MORE](#) (Midwifery Open Resources for Education) is an open repository containing midwifery teaching and learning materials that midwifery students can access across their whole undergraduate programme. Additionally for midwifery lecturers this central resource of midwifery materials can avoid duplication of effort and resources. The open repository also gives access to the midwifery curriculum to students' practice mentors which addresses the potential theory practice gap.

The materials may also be of interest to prospective midwifery students and their teachers, assisting them in selecting correct subject choices and overall better prepare them for entry to a midwifery programme.

02. What is a Put Up Policy?

A put up policy explains the process that the project has undertaken to ensure aspects such as permissions, quality control and intellectual property rights (IPR). *Diagram 1* visually explains this process for the MORE project.

Copyright – Stage One



Transformation – Stage Two

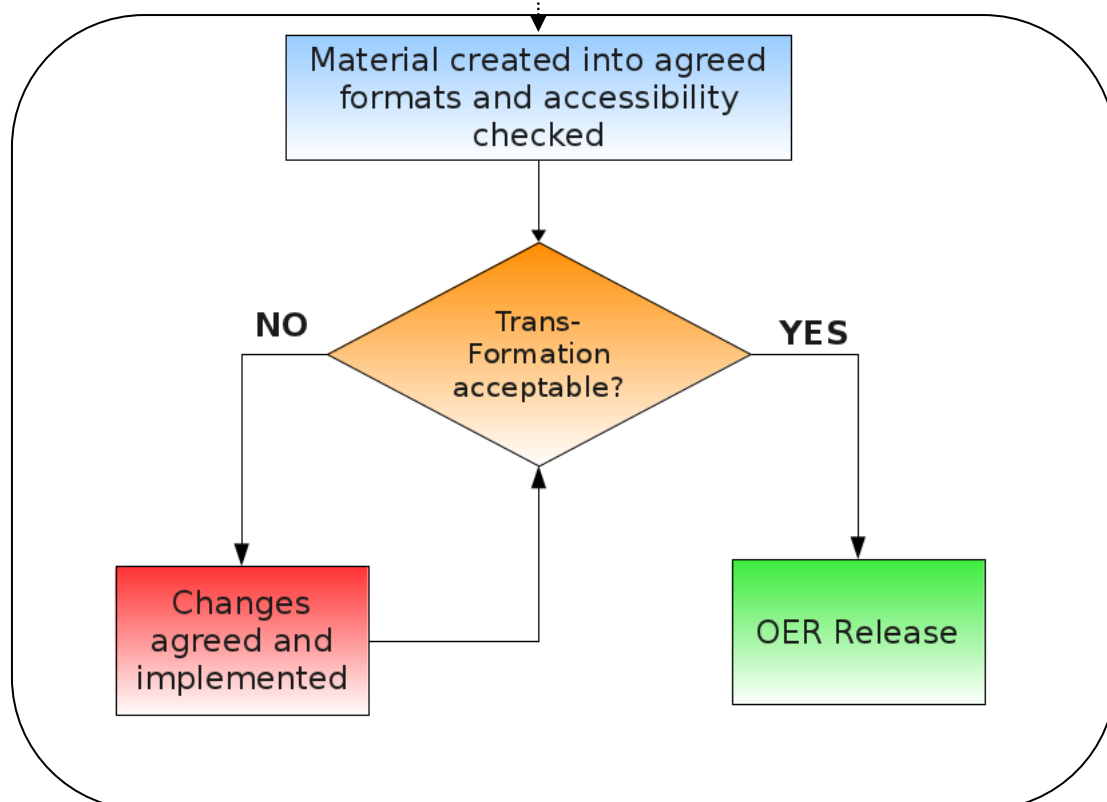


Diagram 1: Put Up Process

03. What is a Takedown Policy?

The project has endeavoured to ensure appropriate permissions have been gathered for the OERs however if a user would like to make a complaint a removal policy for material is available (Take Down policy). *Diagram 2* visually explains the process.

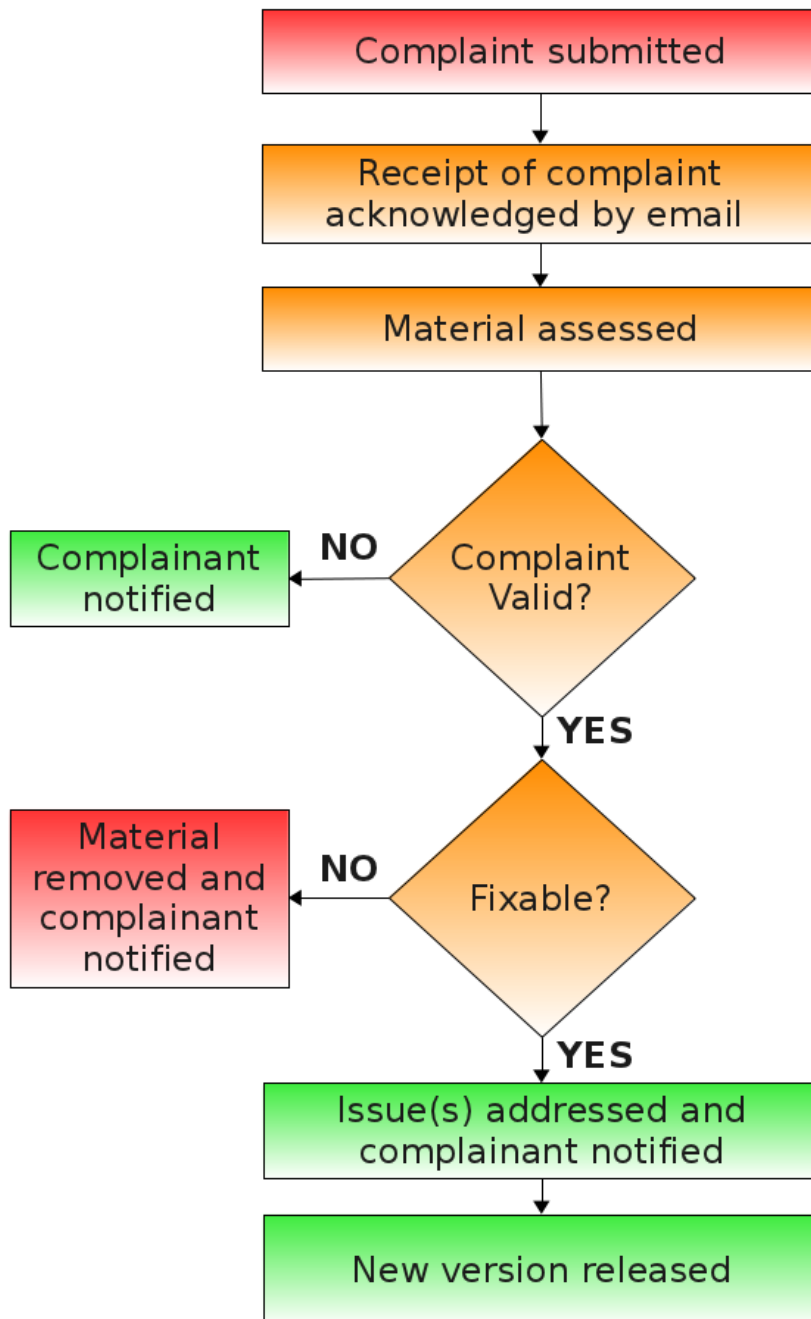


Diagram 2: More Take-down Process

Document Version 1.0 (June 2012) Produced as part of the MORE Project and released under a Creative Commons BY-NC-SA license <http://creativecommons.org/licenses/by-nc-sa/2.0/>